

**AVAILABLE**  
**North Wales Crossing**  
**115 West Montgomery Avenue, North Wales, PA 19454**



**Virtual Tour on our  
You Tube Channel & [jmbasile.com](http://jmbasile.com)**

**LEASE or SALE**

**7,272 Square Foot 2 Story Retail/Office Building with 8 Units**

**LEASE: Commercial / Retail Store Space**

Store #103 - 850 s/f \$1,123.00 per mo. ADA PR

Store #104 - 750 s/f \$991.00 per mo. ADA PR

Store #105 - 900 s/f \$1,200.00 per mo. ADA PR

**Second Floor (elevator ready) Office Space**

Suite 11 - 775 Square feet / \$15.85 PSF / \$1,024.00 per month incl. utilities

Suite 12 - 925 Square feet / \$15.85 PSF / \$1,222.00 per month incl. utilities

Surrounded by numerous retail, restaurant and banking amenities

20 Space Parking Lot / New Roof & Stucco in 2019

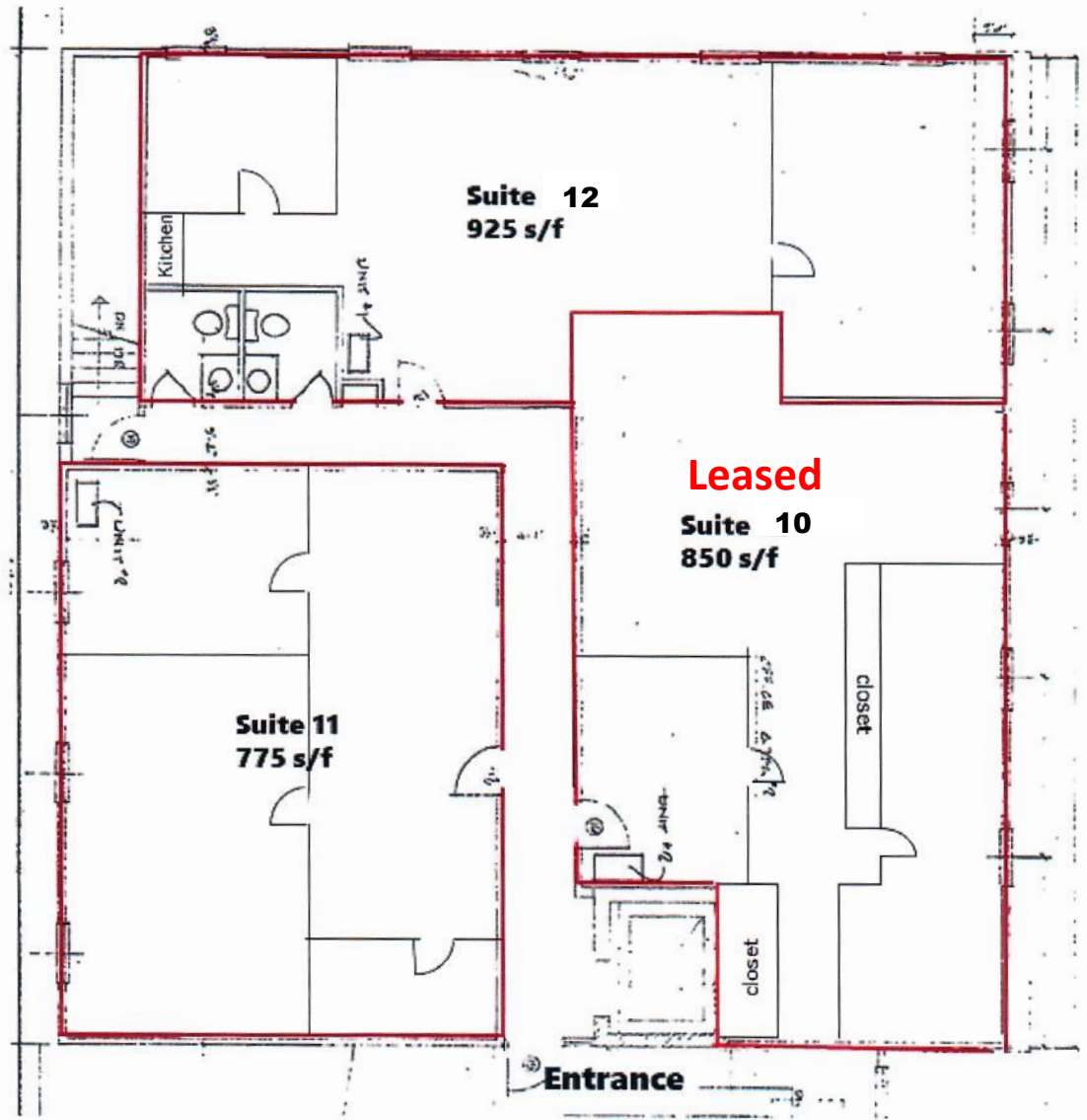
Office w/ kitchen / Elevator ready

**J.M. BASILE & ASSOCIATES, INC.**  
COMMERCIAL & INDUSTRIAL REALTORS

10119 Valley Forge Circle, King of Prussia, PA 19406  
Tel. 610-768-4000 / Fax 610-768-4006 / [sbasile@jmbasile.com](mailto:sbasile@jmbasile.com)

The foregoing information was furnished to us by sources which we deem to be reliable, but no warranty or representation is made as to the accuracy thereof. Information is subject to errors, omissions, change of price, prior sale or withdrawal without notice.

**Offices**



**Stores**

